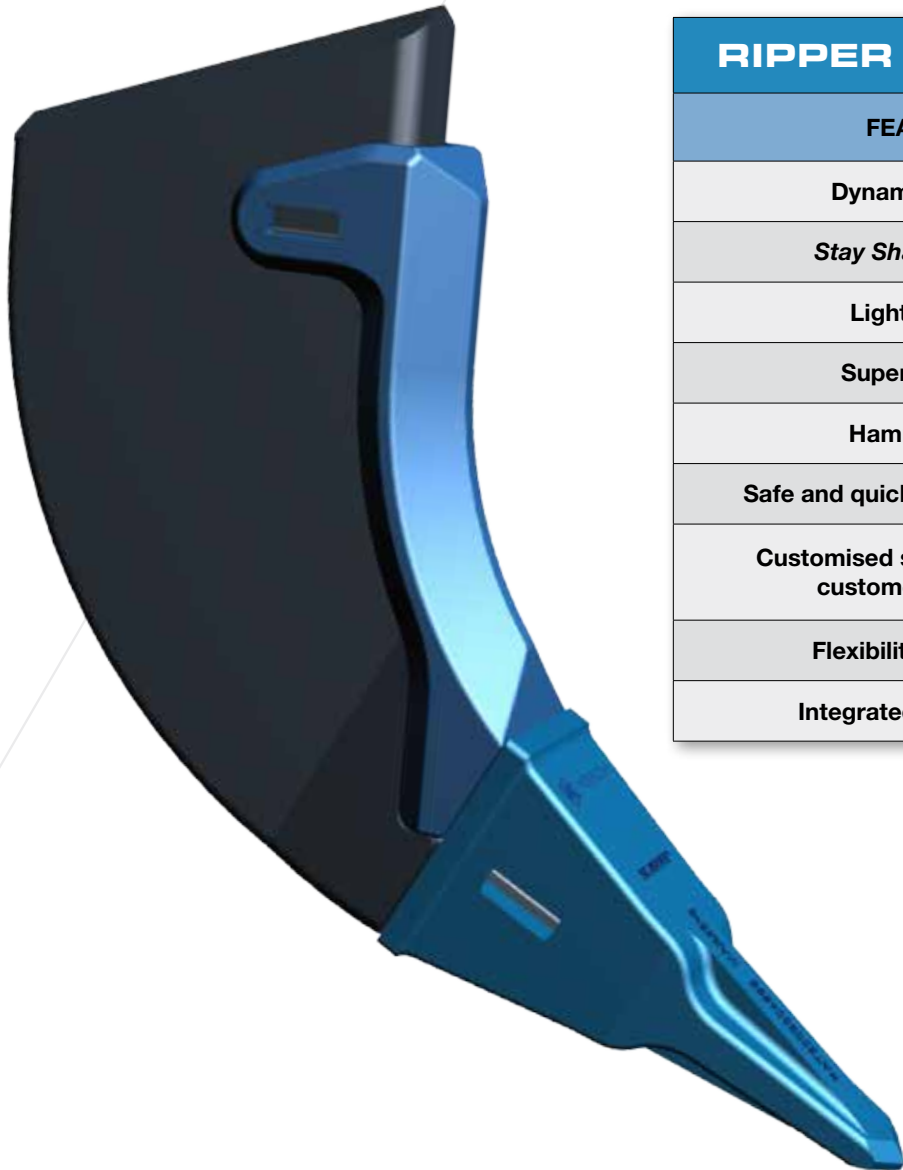


# KEESHARP™ RIPPER POINT



RIPPER POINT FEATURES	
FEATURE	KEECH GET
Dynamic profile	✓
Stay Sharp feature	✓
Light weight	✓
Superior steel	✓
Hammerless	✓
Safe and quick changeout time	✓
Customised solution to meet customer demand	✓
Flexibility in design	✓
Integrated shin guard	✓

## KEECH INNOVATION

Keesharp™ Ripper Point is the latest development from the Keech Innovation and Quality Centre – where people, creative thoughts and a focus on customer challenges combine to develop innovative solutions.

From better mining buckets to cutting edge ground engaging tools and wear components, we continue to innovate from the ground up.

Contact your local Keech Service Centre for maintenance and advice on **1300 4 KEECH** or email [keechinfo@keech.com.au](mailto:keechinfo@keech.com.au)



Global-Mark.com.au®



Global-Mark.com.au®



Global-Mark.com.au®

**Disclaimer:** Conditions specific to your site means performance of field installed products will vary. Installation procedures, operating conditions, material conditions, wear and tear, and maintenance will affect performance and are considered factors outside the control of Keech. © Keech Australia. All rights reserved. Information correct as at 4 August 2015.

# KEESHARP™ RIPPER POINT

## FEATURES AND BENEFITS



### INCREASED STRENGTH

Can withstand peak/impact loads  
Higher reliability  
Longer life  
Resistant to wear and breakages

### SUPERIOR KEECH STEEL

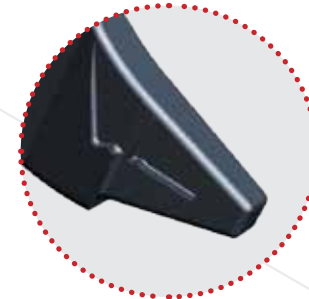
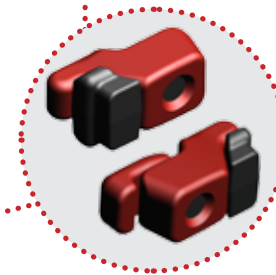
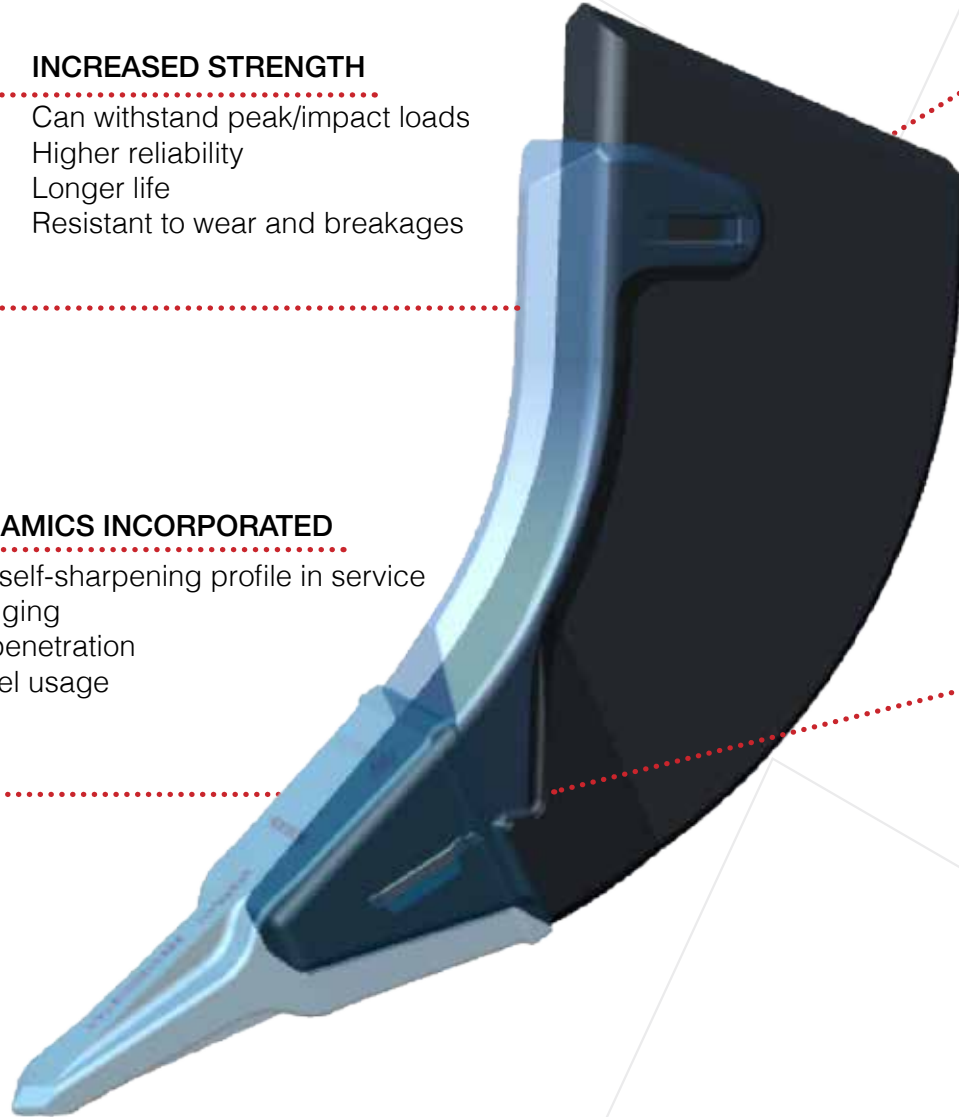
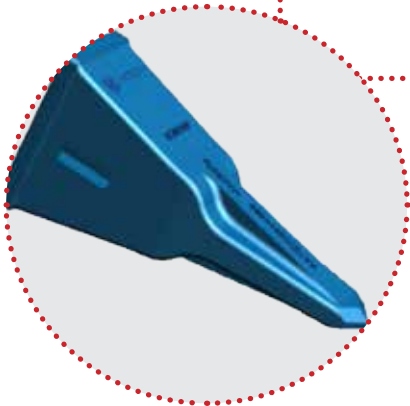
Improved wear life  
Reduced downtime costs

### KEEFAST™ SYSTEM ONLY AVAILABLE FROM KEECH

Completely hammerless  
locking system  
Fast changeout  
Reduces maintenance cost  
Increased safety

### FLOW DYNAMICS INCORPORATED

*Stay Sharp* self-sharpening profile in service  
Efficient digging  
Increased penetration  
Reduces fuel usage



**DESIGNED AND MADE IN AUSTRALIA FOR THE TOUGHEST WORK IN EARTH**